

Making mobility possible again



Call your nurse or doctor immediately if:

You notice a change in the color or amount of fluid in the dressing.

For example:

- If it changes from clear to cloudy or bright red
- You see the dressing fill rapidly with blood
- Your wound looks more red than usual or has a foul smell
- The skin around your wound looks reddened or irritated
- The dressing feels or appears loose
- You experience pain
- The alarm display will not stop flashing

What does PICO 7 do?


PICO 7 is indicated for patients who would benefit from a suction device (Negative Pressure Wound Therapy) as it may promote healing via removal of low to moderate levels of exudate and infection materials.

WARNING: Certain patients are at high risk of bleeding complications which, if uncontrolled, could potentially be fatal. Patients must be closely monitored for bleeding.

How does PICO 7 work?


The pump applies compression to the area, increasing blood flow, and providing the surgical site or wound with a controlled environment that may promote wound healing.

What does the magnet warning mean?



Pump Placement Warning

The PICO 7 pump contains a **MAGNET**. **Keep the PICO 7 pump at least 4 inches (10 cm) away from other medical devices at all times. Failure to do so can cause the other medical device to fail which can result in serious harm including death.**



See Instructions For Use (IFU) for details

For more information on electromagnetic immunity and electromagnetic emissions see: www.mypico.com or ask your Smith & Nephew representative for a hardcopy.

How long will it take to improve your wound?

Results vary, but in many cases improvement can be seen after the first dressing is changed. Discuss with your doctor what results you may expect.

Will PICO 7 be painful?

Upon application, patients may feel a slight pulling or drawing sensation.

PRECAUTION: If pain, reddening, odor, sensitization or sudden change in the volume or color of wound fluid occurs during use, contact your healthcare professional.

How often will the dressings have to be changed?

The dressings have a wear time of up to 7 days, depending on exudate levels.

Will the dressing changes hurt?

In some cases, slight discomfort during dressing changes may be experienced; specifically, during wound cleansing, which may vary based on type and location. If you feel any discomfort, please notify the person who is changing your dressing. PICO 7 dressings should only be applied, changed or removed by a healthcare professional.

When you are asleep

Make sure that the PICO 7 pump is placed in a safe location and cannot be pulled off a table or cabinet onto the floor during sleep.

Showering and washing

Light showering is permissible; however, the PICO 7 pump should be disconnected and placed in a safe location where it will not get wet. The dressing should not be exposed to a direct spray or submerged in water. While disconnected, ensure the end of the tubing attached to the dressing is facing downward so that water does not enter the tube.

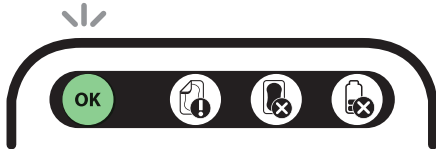
Disconnection of the pump from the dressing

- Press the orange button to pause therapy
- Unscrew the two part connector
- Place the pump somewhere safe

Light guide

Green “OK” light flashes

Continuously flashing green: pump working properly, pressure preset.



Orange “leak” light flashes

Will flash orange color if leak is present; see Troubleshooting below.



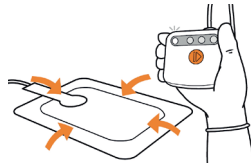
Green “OK” light and orange “battery low” light flashes

Orange light will flash if batteries are low .



Troubleshooting

- Press down along border of dressing until no wrinkles are present.
- Pump will resume to flashing green when problem resolves.



PRECAUTION: PICO® 7 does not contain audible alerts. The pump should be carried so that it is accessible and the patient/healthcare professional can check the status routinely.

If you have any other questions, please speak to your nurse or doctor.

Your nurse:

Your doctor:

Other useful numbers:

More ways to learn about PICO 7

Customer Care/NPWT Clinical Hotline: 1-800-876-1261

Reimbursement Hotline: 1-888-705-0061

www.possiblewithpico.com

The decision to use Smith & Nephew products should be made by a healthcare professional, in line with applicable local protocols. Smith & Nephew products should always be used for the indications set out in the applicable Instructions For Use.

For detailed product information, including indications for use, contraindications, effects, precautions, warnings, and important safety information, please always consult product’s Instructions for Use (IFU) prior to use.

Advanced Wound Management
Smith & Nephew

Fort Worth, TX 76109
USA

www.smith-nephew.com
Customer Care Center
1 800 876-1261
T 727 392-1261
F 727 392-6914

*Trademark of Smith & Nephew
©2018 Smith & Nephew
PCBE10-14182-0818

Supporting healthcare professionals for over 150 years